


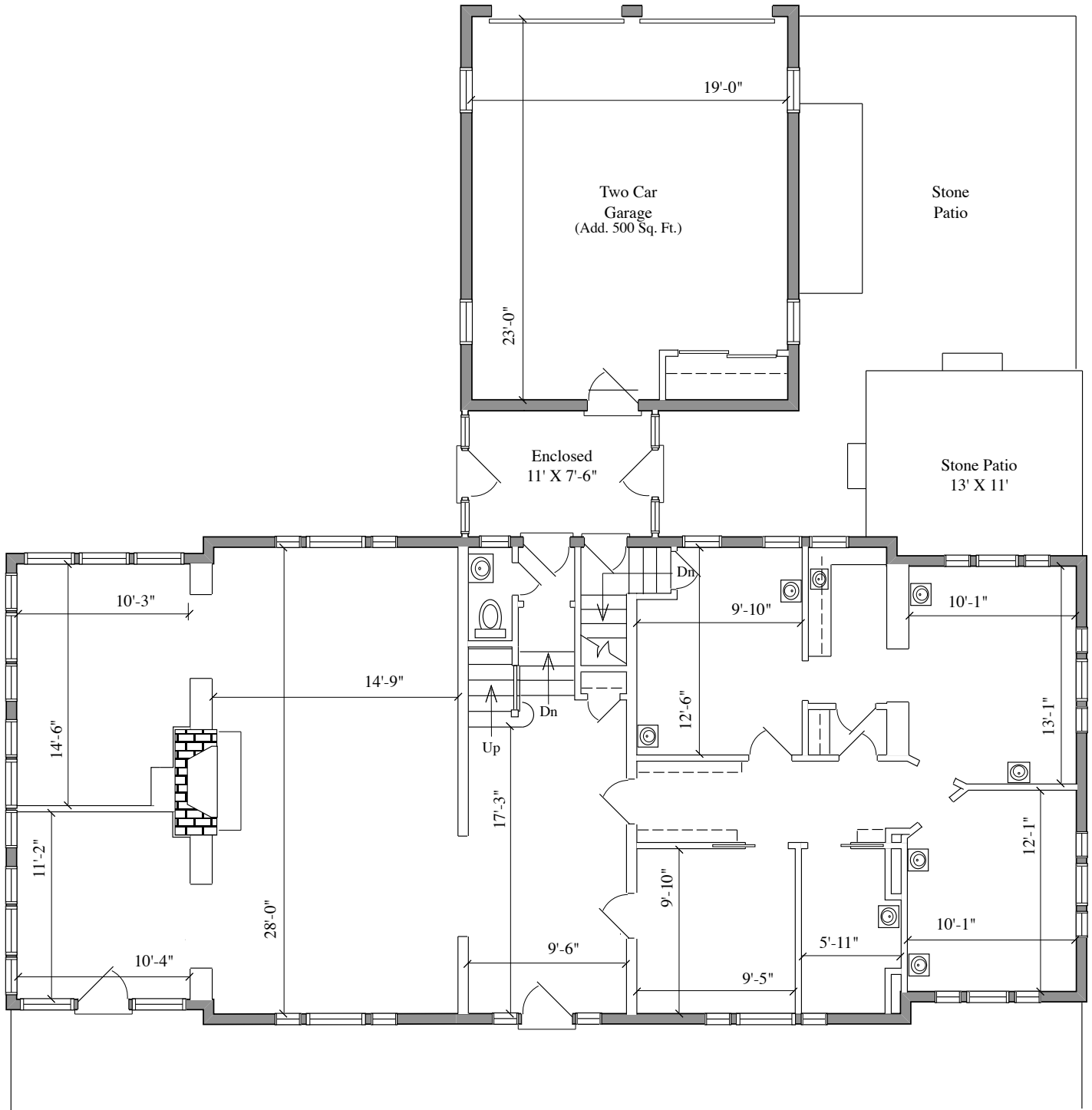
125 KINGS HWY W.
HADDONFIELD, NJ

DETAILED FLOOR PLANS •  ROOMINDERS • REAL ESTATE MARKETING		
p 856.429.4233	web - www.roominders.com	f 856.429.8118
e jon@roominders.com	measured by Jon Hitchner 3.12.08	Revised -
* Actual measurements may vary		* Not to be used for construction purposes
* Position of walls and fixtures are approximate		* Only to be used with written permission

APPROXIMATE
SQUARE FEET

4,118

(Garage add.
500 sq. ft.)



FIRST FLOOR
1,880 SQ. FT.