

125 KINGS HWY W.
HADDONFIELD, NJ

DETAILED FLOOR PLANS •  ROOMINDERS • REAL ESTATE MARKETING

p 856.429.4233

web - www.roominders.com

f 856.429.8118

e jon@roominders.com

measured by Jon Hitchner 3.12.08

Revised -

* Actual measurements may vary

* Not to be used for construction purposes

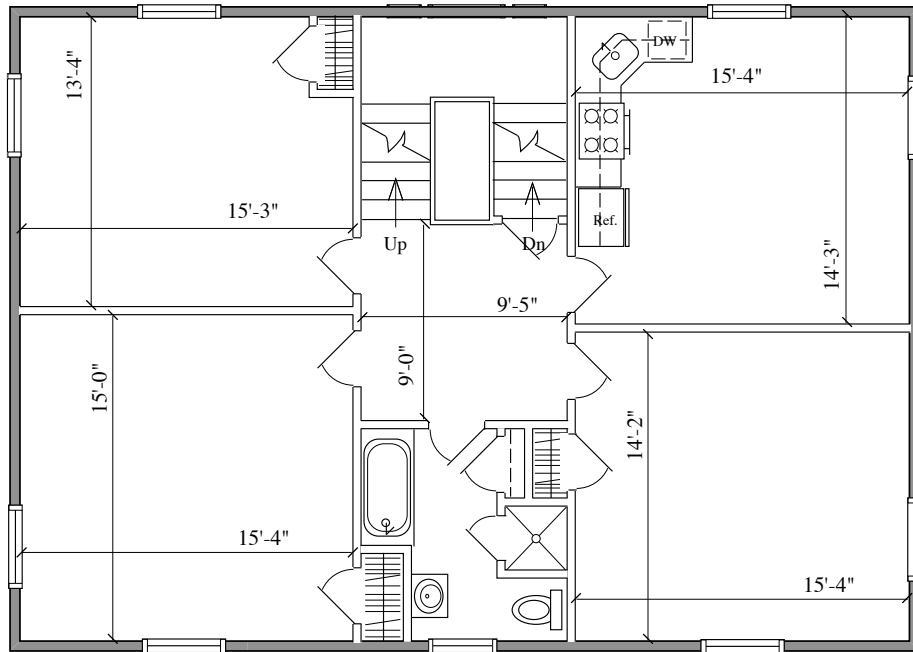
* Position of walls and fixtures are approximate

* Only to be used with written permission

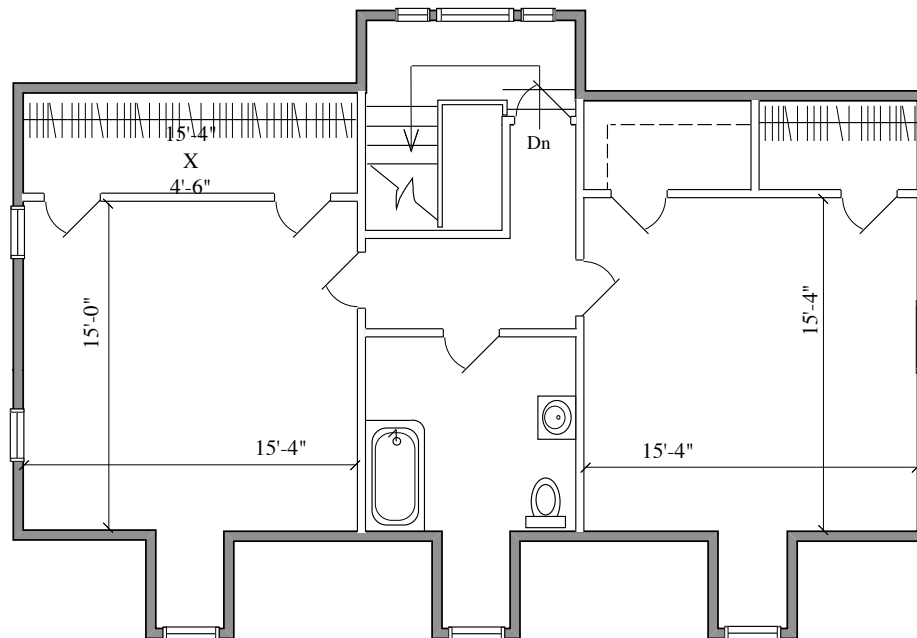
APPROXIMATE
SQUARE FEET

4,118

(Garage add.
500 sq. ft.)



SECOND FLOOR
1,255 SQ. FT.



THIRD FLOOR
983 SQ. FT.