
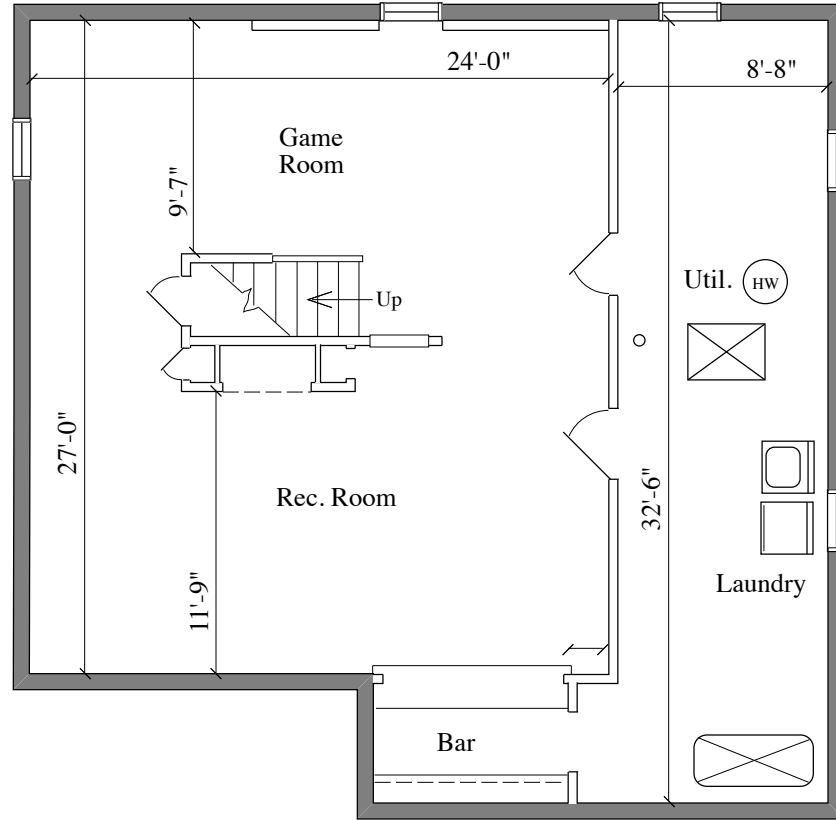


125 W. PARK BLVD.
HADDON TWP., NJ

DETAILED FLOOR PLANS •  ROOMINDERS • REAL ESTATE MARKETING		
p 856.429.4233	web - www.roominders.com	f 856.429.8118
e jon@roominders.com	measured by Jon Hitchner 5.5.10	Revised -
* Actual measurements may vary		* Not to be used for construction purposes
* Position of walls and fixtures are approximate		* Only to be used with written permission

APPROXIMATE SQUARE FEET
2,190
(Garage add. 575 sq. ft.)



BASEMENT
1,095 SQ. FT.