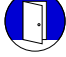
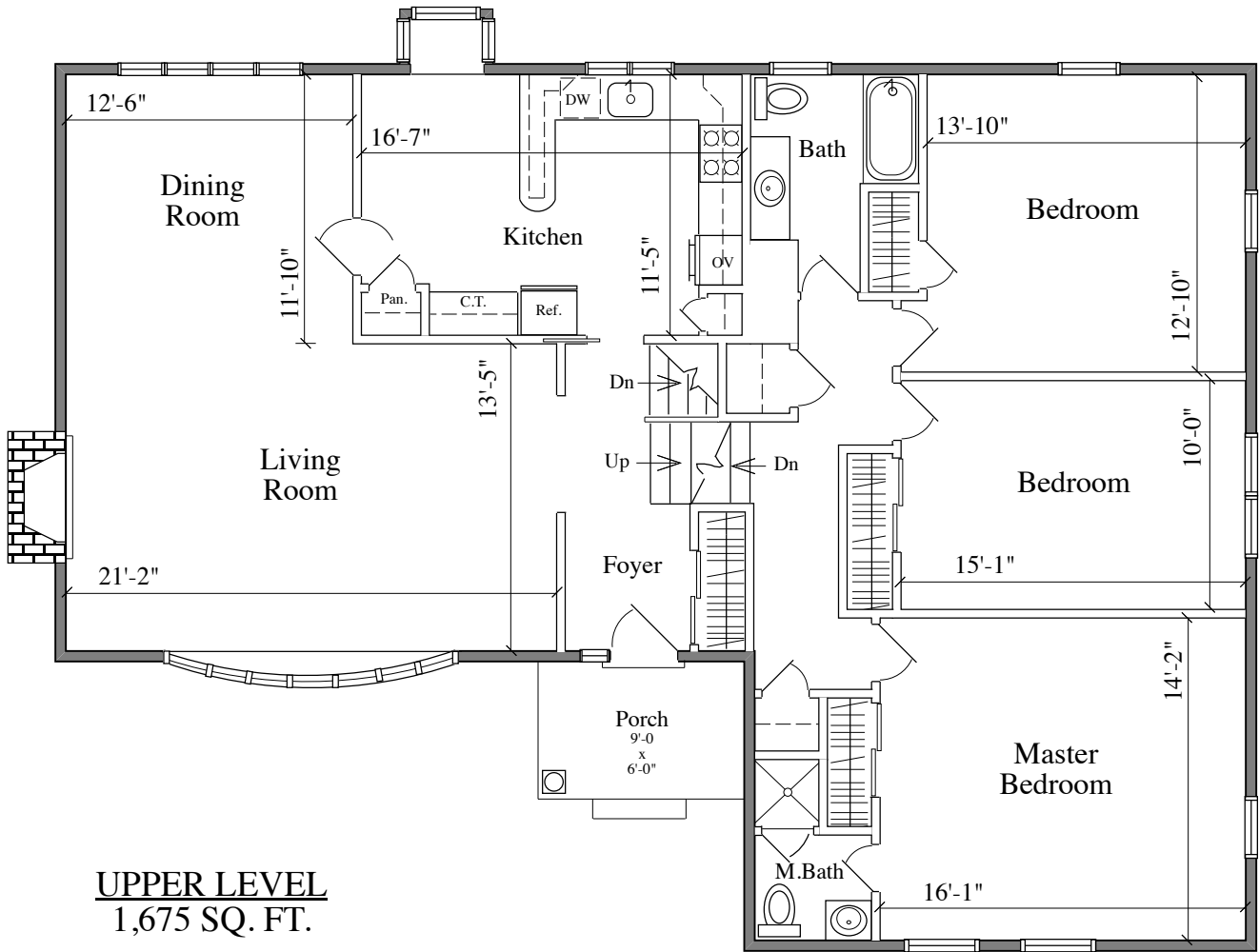


26 BIRCHALL DRIVE  
HADDONFIELD, NJ

DETAILED FLOOR PLANS •  ROOMINDERS • REAL ESTATE MARKETING			APPROXIMATE SQUARE FEET
p 856.429.4233	web - www.roominders.com	f 856.429.8118	<b>2,817</b>
e jon@roominders.com	measured by Jon Hitchner 5.12.10	Revised -	
* Actual measurements may vary		* Not to be used for construction purposes	
* Position of walls and fixtures are approximate		* Only to be used with written permission	

Garage add.  
425 sq. ft.



**UPPER LEVEL**  
1,675 SQ. FT.