
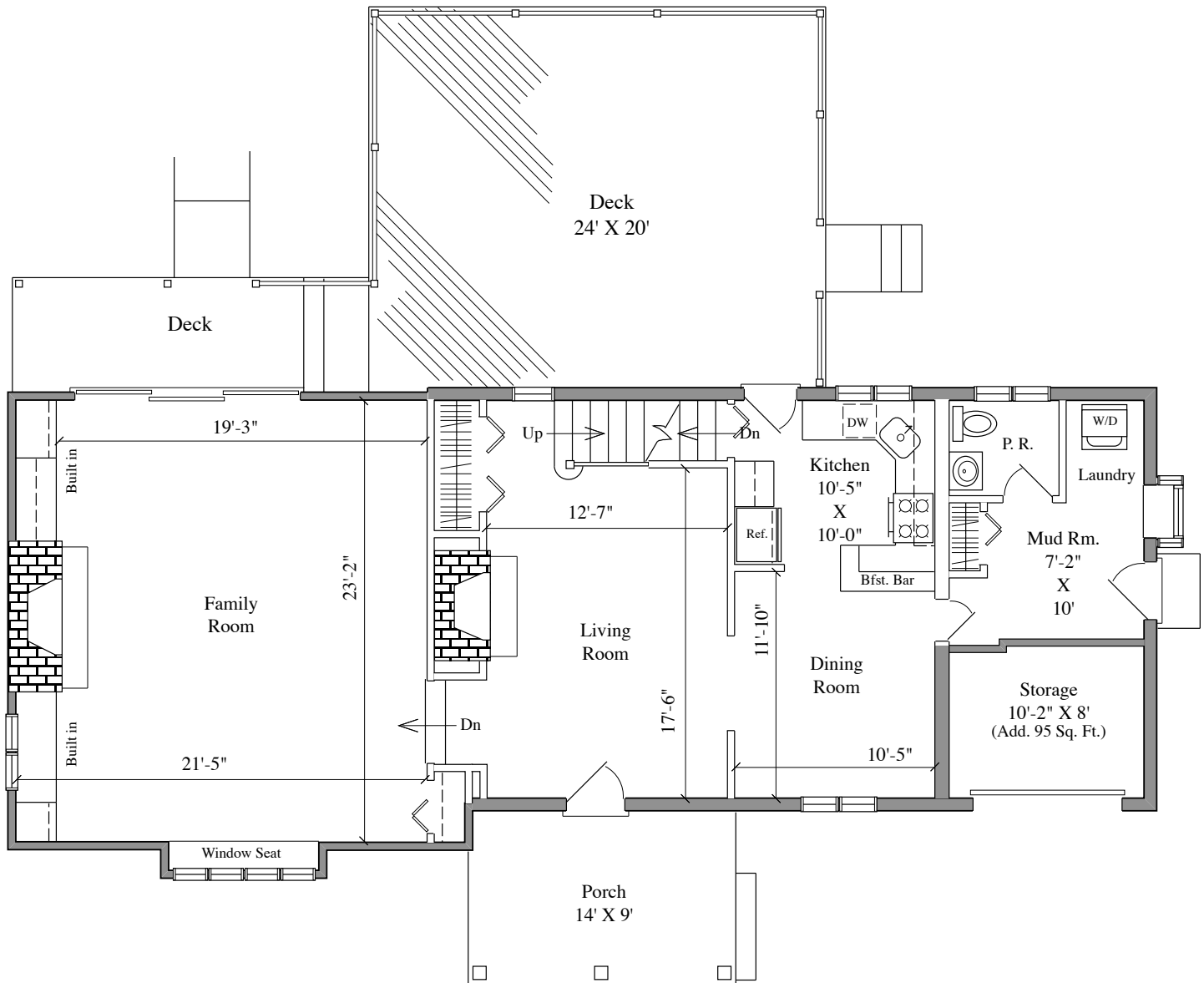


301 W. PARK BLVD.  
HADDON TWP., NJ

DETAILED FLOOR PLANS • 		ROOMINDERS • REAL ESTATE MARKETING	APPROXIMATE SQUARE FEET
p 856.429.4233	web - www.roominders.com	f 856.429.8118	2,633
e jon@roominders.com	measured by Jon Hitchner 4.22.08	Revised -	
* Actual measurements may vary		* Not to be used for construction purposes	
* Position of walls and fixtures are approximate		* Only to be used with written permission	



**FIRST FLOOR**  
1,300 SQ. FT.