
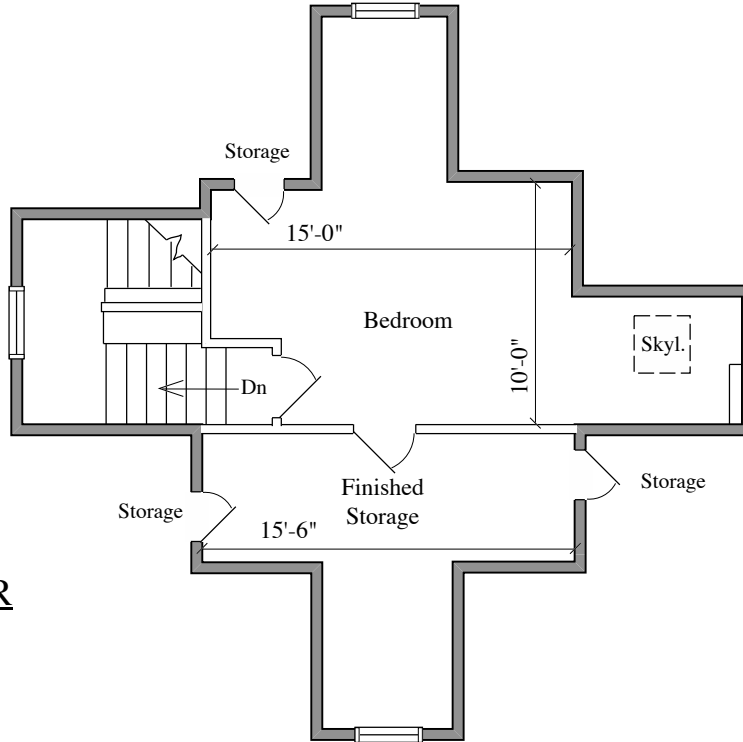
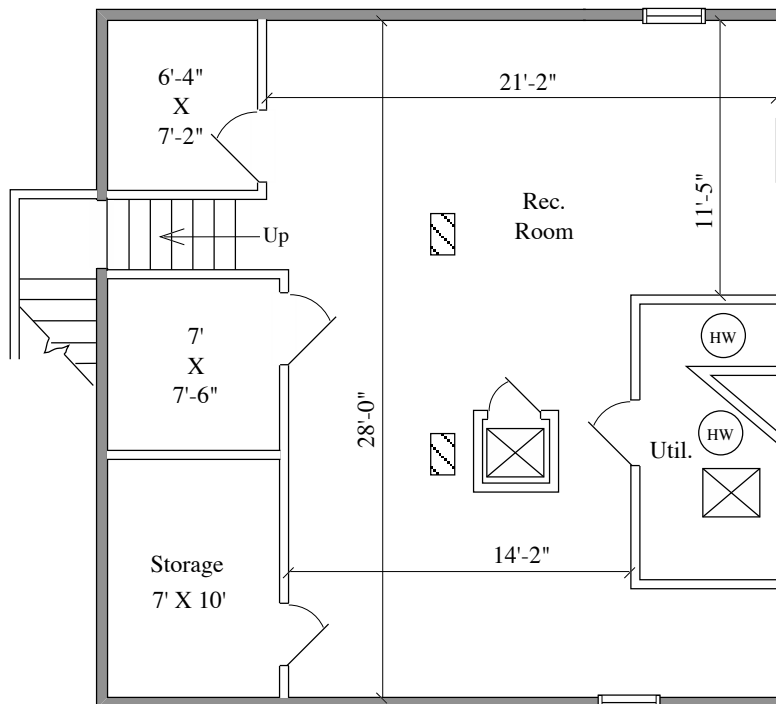


305 CHESTNUT ST.
HADDONFIELD, NJ

DETAILED FLOOR PLANS •  ROOMINDERS • REAL ESTATE MARKETING			APPROXIMATE SQUARE FEET
p 856.429.4233	web - www.roominders.com	f 856.429.8118	4,745
e jon@roominders.com	measured by Jon Hitchner 12.26.06	Revised -	
* Actual measurements may vary		* Not to be used for construction purposes	
* Position of walls and fixtures are approximate		* Only to be used with written permission	



THIRD FLOOR
480 SQ. FT.



BASEMENT
840 SQ. FT.