

380 KINGS HIGHWAY W.  
HADDONFIELD, NJ

APPROXIMATE  
SQUARE FEET  
SHOWN **5,928**  
(Garage add.  
476 sq. ft.)

DETAILED FLOOR PLANS •  ROOMINDERS • REAL ESTATE MARKETING

p 856.429.4233

web - www.roominders.com

f 856.429.8118

e jon@roominders.com

measured by Jon Hitchner 10.28.08

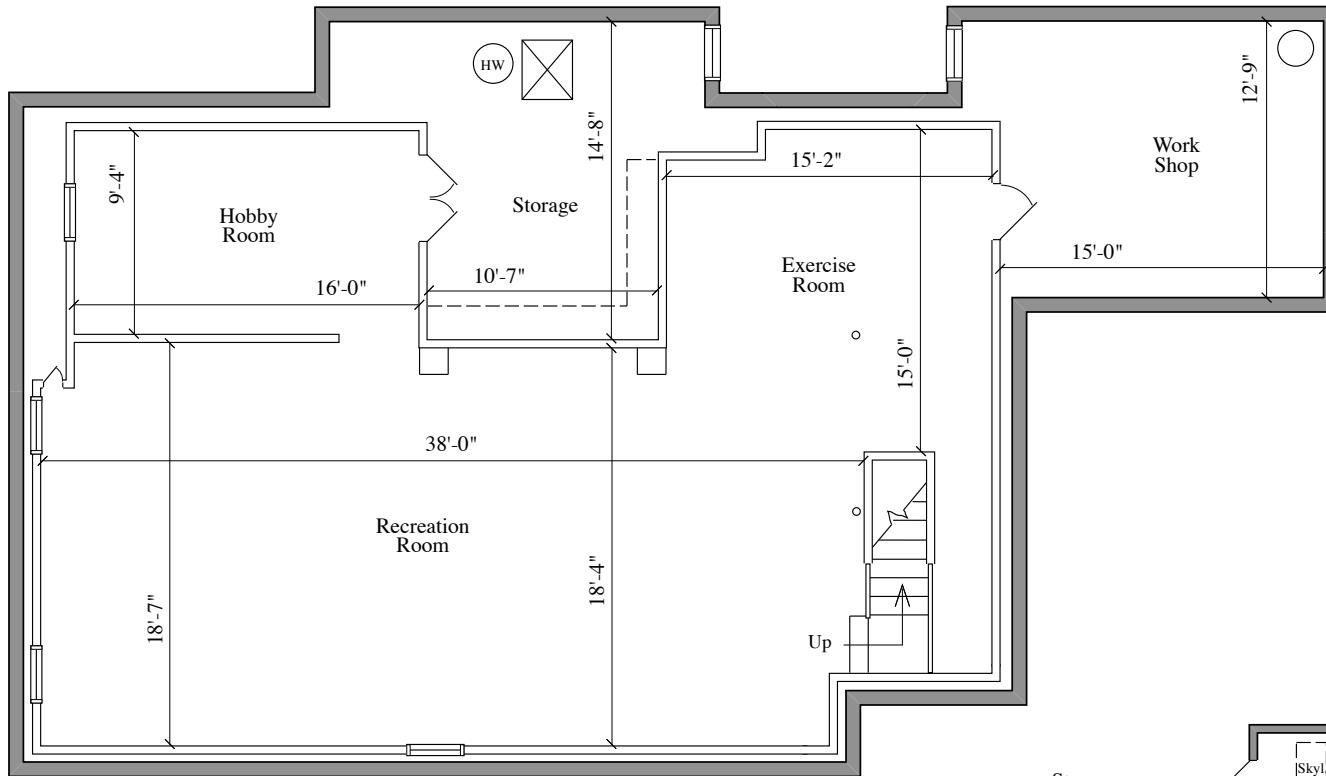
Revised -

\* Actual measurements may vary

\* Not to be used for construction purposes

\* Position of walls and fixtures are approximate

\* Only to be used with written permission



**BASEMENT**  
1,750 SQ. FT.

**THIRD FLOOR**  
344 SQ. FT.

