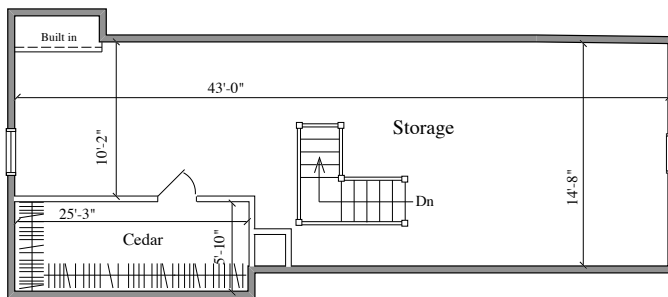
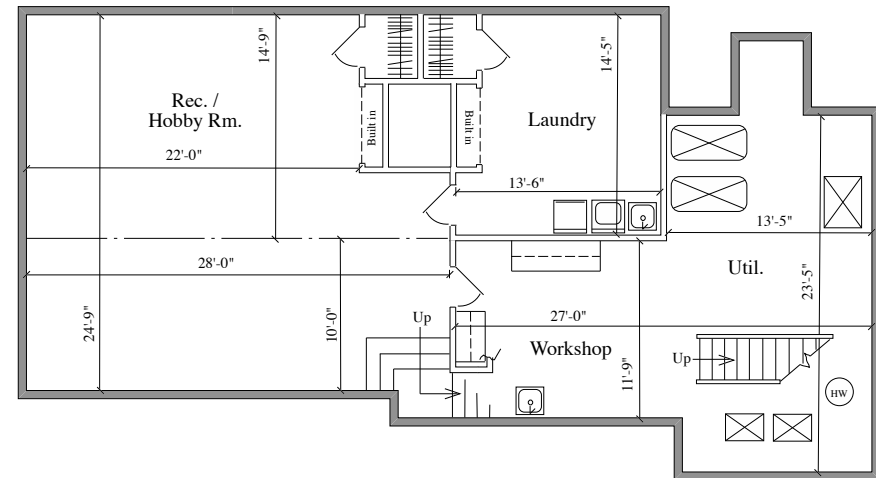


SECOND FLOOR
1,565 SQ. FT.

405 LOUCROFT AVE. HADDONFIELD, NJ		APPROXIMATE SQUARE FEET SHOWN 7,728 (Garage Add. 792 Sq. Ft.)
DETAILED FLOOR PLANS • ROOMINDERS • REAL ESTATE MARKETING		
p 856.429.4233	web - www.roominders.com	f 856.429.8118
e jon@roominders.com	measured by Jon Hitchner 11.6.06	Revised -
* Actual measurements may vary		* Not to be used for construction purposes
* Position of walls and fixtures are approximate		* Only to be used with written permission



THIRD FLOOR
728 SQ. FT.



BASEMENT
1,530 SQ. FT.