

407 CHEWS LANDING RD.
HADDONFIELD, NJ

DETAILED FLOOR PLANS •  ROOMINDERS • REAL ESTATE MARKETING

p 856.429.4233

web - www.roominders.com

f 856.429.8118

e jon@roominders.com

measured by Jon Hitchner 12.19.07

Revised -

* Actual measurements may vary

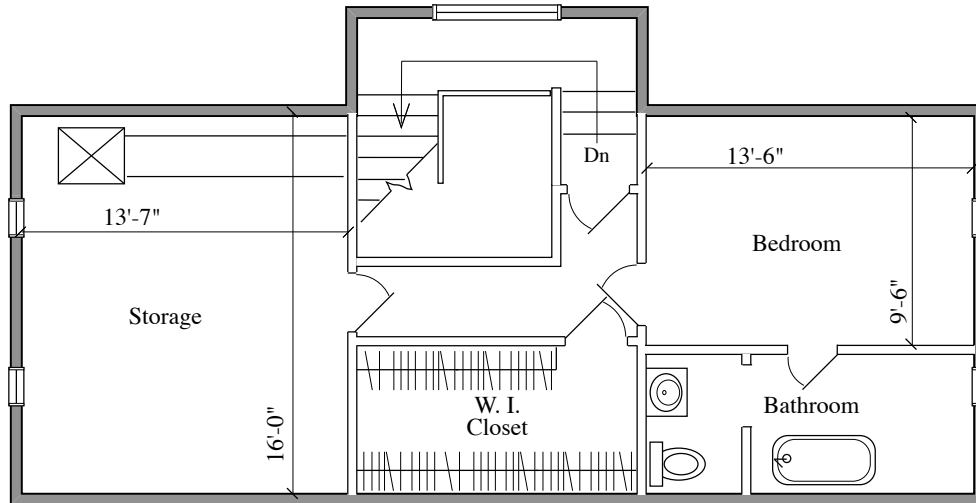
* Not to be used for construction purposes

* Position of walls and fixtures are approximate

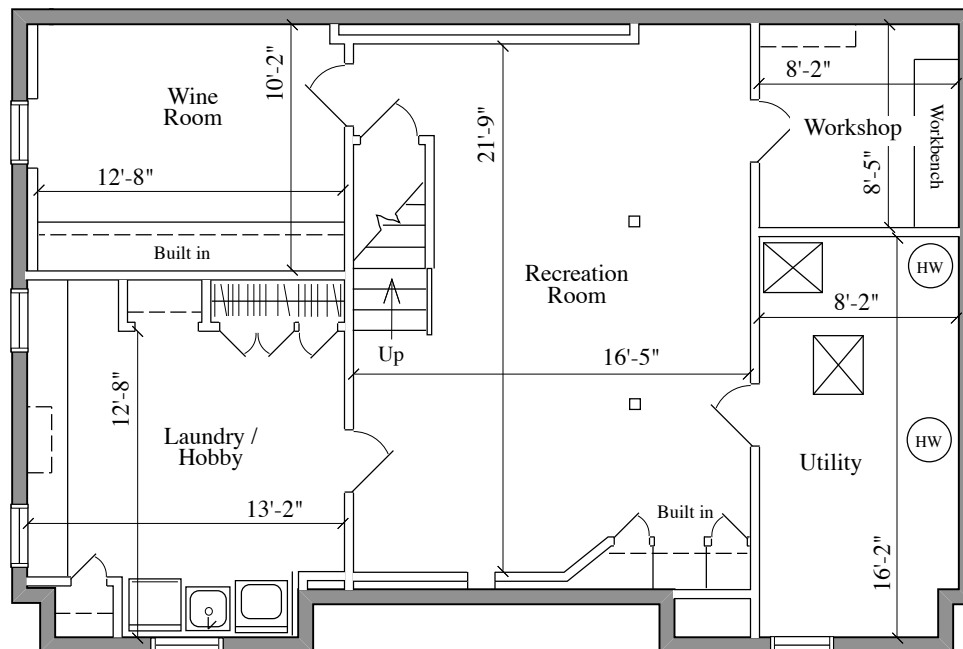
* Only to be used with written permission

APPROXIMATE
SQUARE FEET

4,434



THIRD FLOOR
728 SQ. FT.



BASEMENT
1,040 SQ. FT.