

440 Euclid Avenue
Haddonfield, NJ

DETAILED FLOOR PLANS |



ROOMINDERS

| REAL ESTATE MARKETING

p 856.317.9869

web www.roominders.com

f 856.486.4417

e jon@roominders.com

measured by Jon Hitchner - 1.31.03

Revised -
4/29/10

Approximate Total
Square Feet Shown

2,323

* Actual measurements may vary

Not to be used for construction purposes

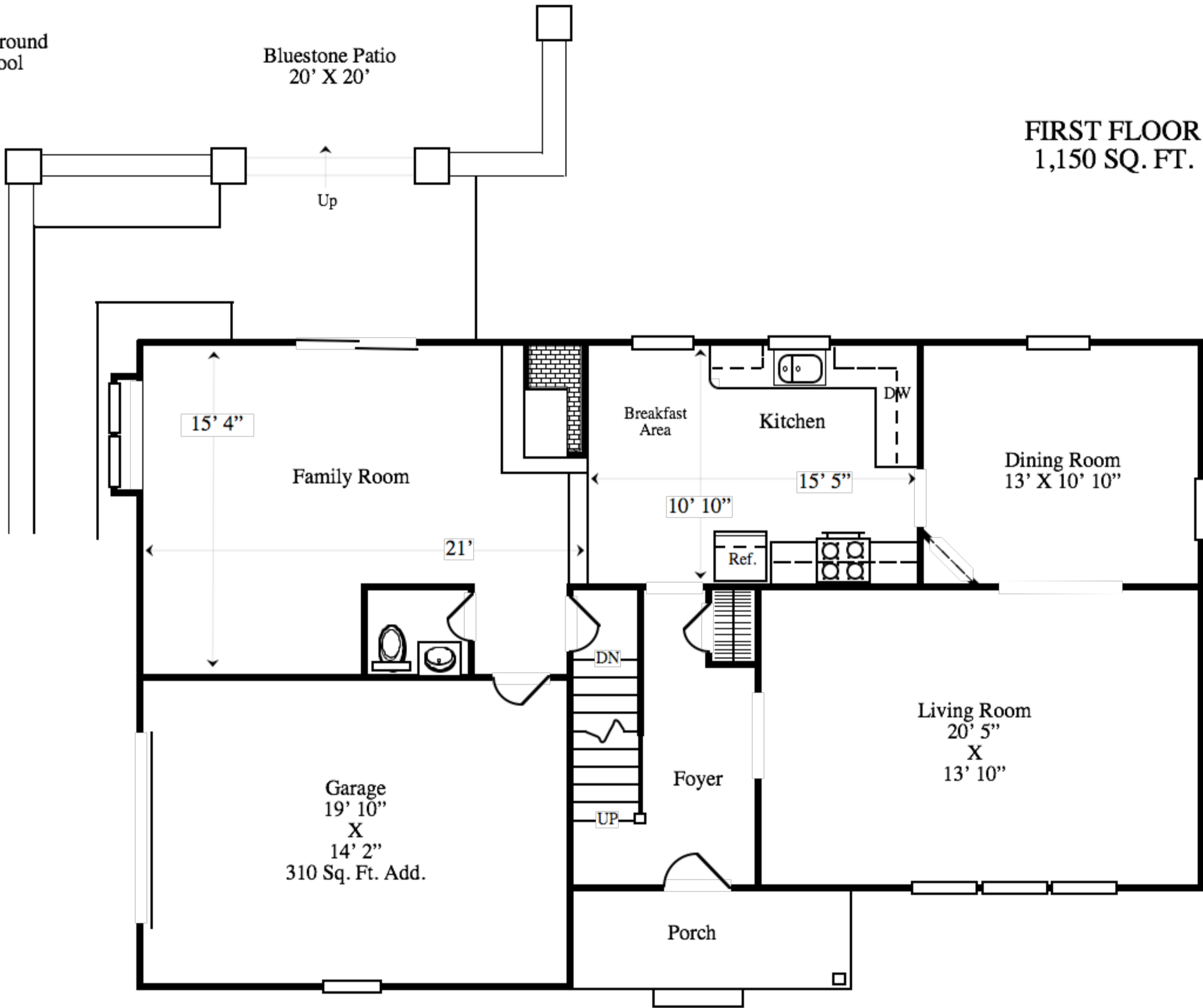
Position of walls and fixtures are approximate

Only to be used with written permission

In Ground
Pool

Bluestone Patio
20' X 20'

FIRST FLOOR
1,150 SQ. FT.



SECOND FLOOR
1,173 SQ. FT.

