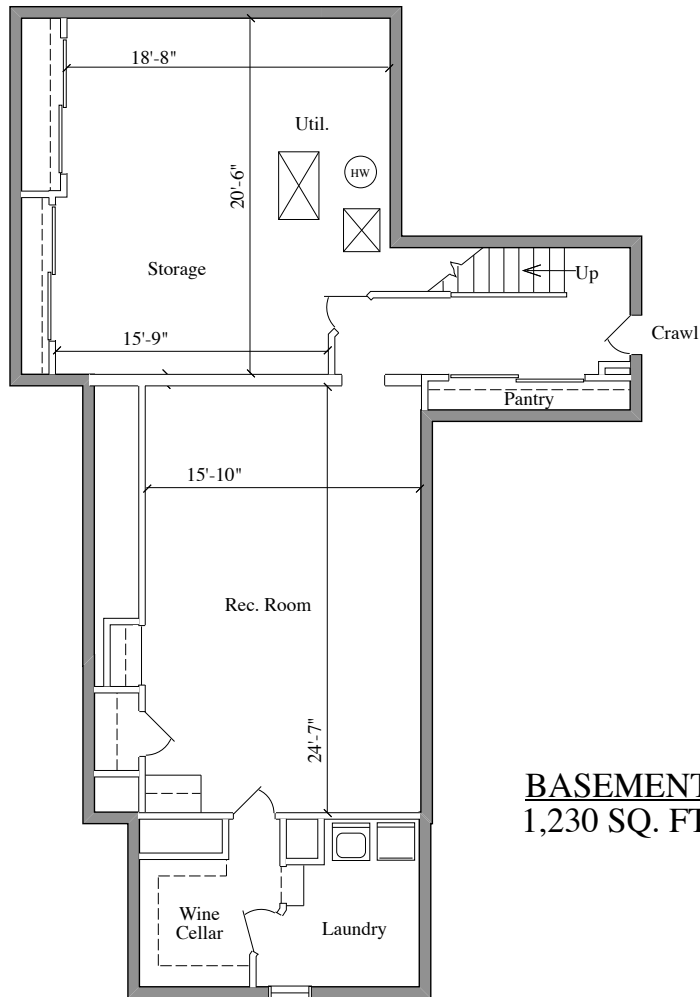
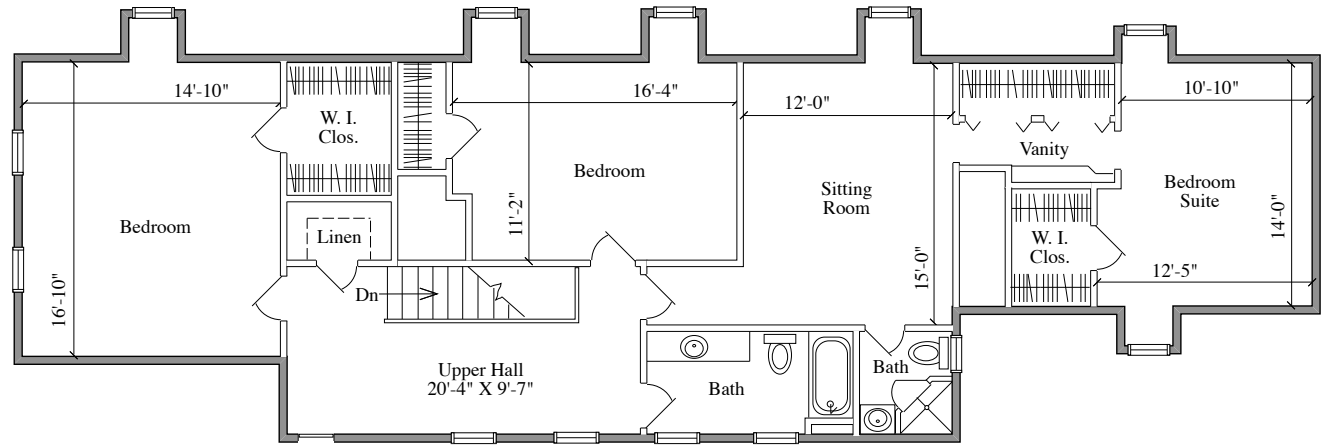


SECOND FLOOR
1,527 SQ. FT.



BASEMENT
1,230 SQ. FT.

**76 LANE OF ACRES
HADDONFIELD, NJ**

APPROXIMATE
SQUARE FEET
SHOWN **5,817**
(Garage add.
570 sq. ft.)

DETAILED FLOOR PLANS •  ROOMINDERS • REAL ESTATE MARKETING

p 856.429.4233 | web - www.roominders.com | f 856.429.8118

e jon@roominders.com | measured by Jon Hitchner 1.29.08 | Revised -

* Actual measurements may vary | * Not to be used for construction purposes

* Position of walls and fixtures are approximate | * Only to be used with written permission