
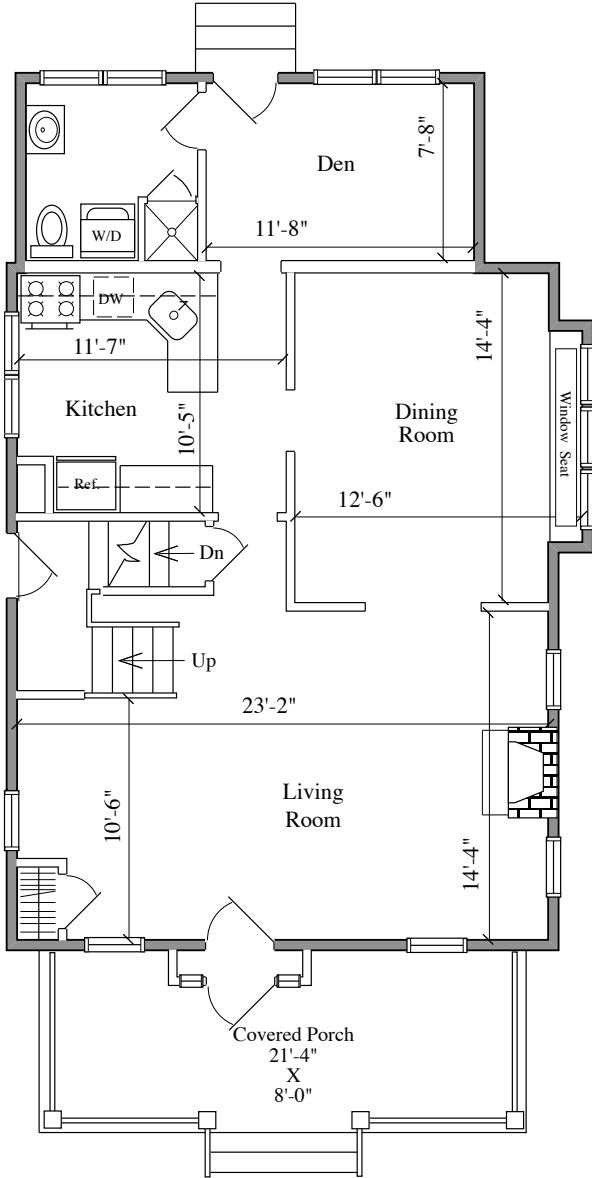
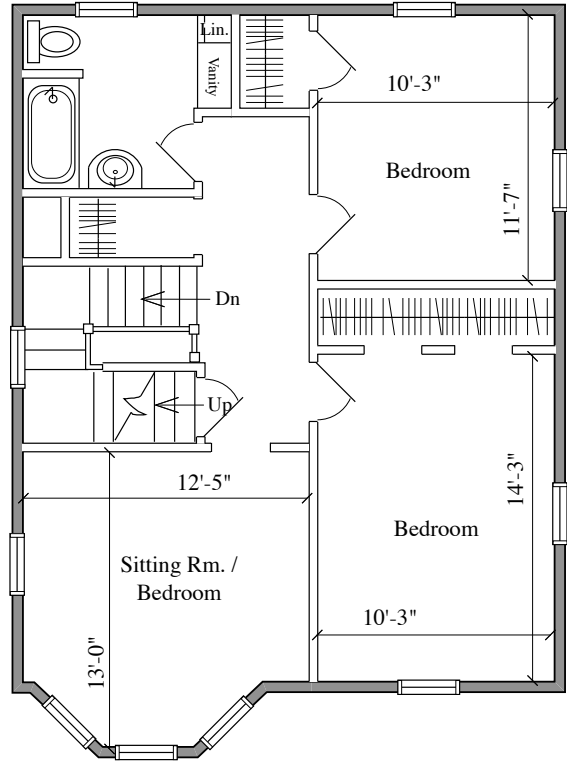


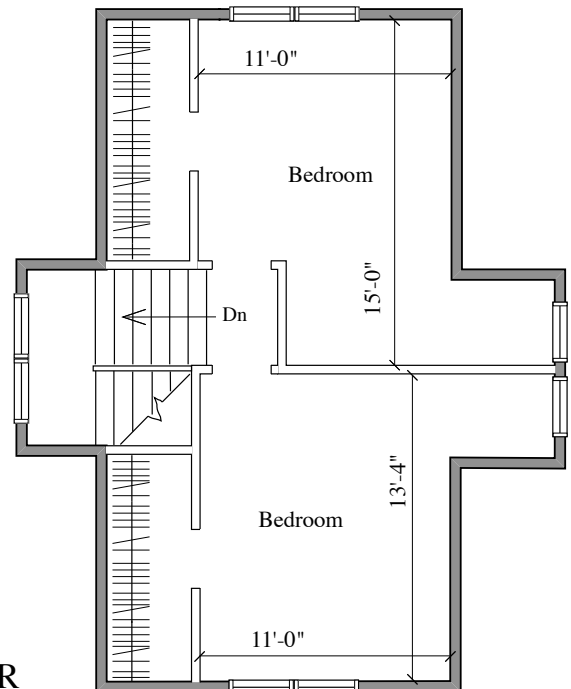
<b>9 7th AVENUE HADDON HEIGHTS, NJ</b>	DETAILED FLOOR PLANS •  <b>ROOMINDERS</b> • REAL ESTATE MARKETING		APPROXIMATE SQUARE FEET	
	p 856.429.4233	web - www.roominders.com	f 856.429.8118	<b>2,225</b>
	e jon@roominders.com	measured by Jon Hitchner 1.22.08	Revised -	
	* Actual measurements may vary		* Not to be used for construction purposes	
	* Position of walls and fixtures are approximate		* Only to be used with written permission	



**FIRST FLOOR**  
920 SQ. FT.



**SECOND FLOOR**  
755 SQ. FT.



**THIRD FLOOR**  
550 SQ. FT.